

# Stamps & Tongs

The E-mail Newsletter of the  
Dallas-Park Cities Philatelic Society



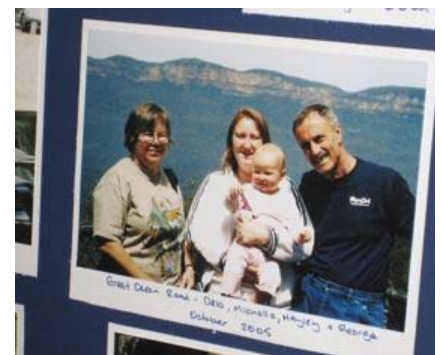
## Closed Album: Deborah Kempston

It is with great sadness to report the death of Dallas-Park Cities Philatelic Society member Deborah Kempston. Deborah passed away June 26 after a long battle with cancer. She held degrees from Stephen F. Austin University in Secondary Education and a Masters in History. She was employed as teacher for over thirty years, working in the Richardson Independent School District at Lake Highlands Junior High School and Forest Meadows Junior High School.

Two of Deborah's main hobbies are those that she shared with her husband George: running and stamp collecting. Deborah was an avid runner and participated in marathons both in the United States (Boston Marathon) and abroad. They also shared a love for philately, which was evident by her participation and service to the Dallas-Park Cities Philatelic Society. Deborah served many official positions with the DPCPS, including secretary and president. Deborah was also a fixture at the DPCPS youth table at many TEXPEX stamp shows. She and George worked hard to organize all of the free stamps and philatelic activities for the kids who attended the show.

Deborah's leadership and spirit will be missed at our meetings. To honor her memory, the membership has made a decision to create the **Deborah Kempston Lecture Series**. The first presentation in the series will be given by Steven Crippie of Heritage Auction Galleries. The intent of the lecture series is to bring dynamic philatelic speakers to Dallas to talk about our great hobby. Plans are in the work to establish a fund to support future lectures in her memory.

**Photographs from the July 2 memorial service courtesy of George Kempston.**



President  
Rod Gabel  
Vice-President  
Harry Pedersen  
Secretary  
Sam Phillippi  
Treasurer  
Jack Urish

Board of Directors  
Dr. Harold Boehning  
Doug Moss  
Mark Solomon

Newsletter Editor  
Doug Moss  
Youth Philately  
George Kempston



## Notes from the Editor



Good news about our September speaker, Steven Crippe. He has confirmed that he will give the presentation on September 9. Now it is up to us to put "butts" in the seats that night. Plan on attending his presentation on "Errors, Freaks and Oddities." We need to have a 100% turnout of the membership. Another reason to make sure we have a good turnout is that this special presentation will now have a name: the **Deborah Kempston Lecture Series**. To honor Deborah, the Executive Board made a decision give a name to our special speaker series. So please make sure you attend this special event September 9 at 7:30 at the Edgemere.

Do not forget the Texas Stamp Dealer Association (TSDA) Bourse the weekend of July 10 and 11. Area stamp dealers will be in attendance with their best stock. Make sure you wear your DPCPS name tag to let them know we are their customers.

Finally, it is not too early to start thinking about TEXPEX 2010. At the last DPCPS meeting I spoke with Jeff Erichson who is organizing the show. He is looking for DPCPS members to volunteer for the show at the registration desk and youth table. Jeff also told me he can arrange for us (for free) a room at the show to hold a meeting. More details on that later. Enjoy your summer, do not get to hot, drink lots of fluids. See you at the Edgemere -DM.

### July-Sept. 2009 Philatelic Calendar

**July 8** Program: "Collecting Modern United States Postage." speaker Paul Rozewicz.

**July 10-11** TSDA Bourse at the Richardson Civic Center.

**July 22** Quarterly Auction. Get your lots ready now! **Use the auction form on page 6!**

**August 10** Program: "Flag Stamps" speaker Paul Wittehoeft.

**August 24** Mini-Auction & Philatelic Spotlight.

**September 9** Deborah Kempston Lecture Series: Steven Crippe "Errors, Freaks and Oddities."

**September 23** Mini-Auction and Philatelic Spotlight.

To volunteer for a presentation or Philatelic Spotlight, contact Harry Pedersen.

Bring a friend to the next meeting! Encourage them to join the DPCPS!

## Cunningham Philatelics

### Philatelic Consultants

Elusive Items  
Stamps and Covers

Collections  
Appraisals

THOMAS L. CUNNINGHAM  
A.P.S. 082424, TSDA  
(214) 546-1179

P.O. Box 863237  
Plano, TX 75086-3237  
cunninghamstamps@aol.com

## stampsuniversal.com

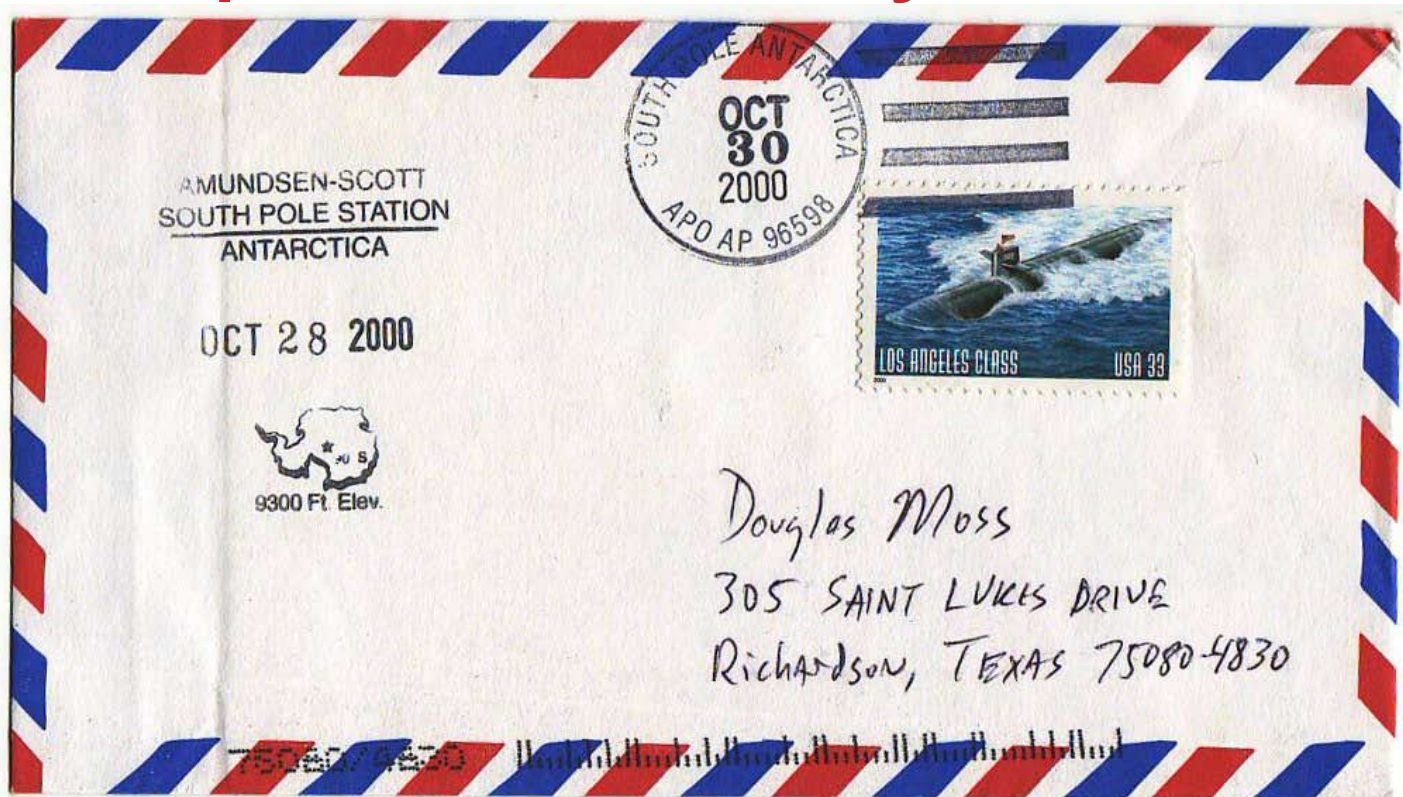
Jim Myers

US, Worldwide, 19th Century, #1's, Socked on the Nose,  
Cancels, Topicals, Great Britain & Colonies & Ireland.

P.O. Box 2047 Coppell, TX 75019  
(972) 304-1671 jasdmyers@earthlink.net



# Metroplex Postal History of the Month



It is hot outside, a typical Texas summer. Enjoy the cover above that made the trip to the South Pole and back to the Metroplex in 2000. There are three Antarctic stations you can send mail to request postmarks. A philatelist is limited to two covers per station per year. Often the postal clerk at the stations will apply their own cachet to your mail (see the Oct 28 cachet). If you want to get one of these “cool” covers, go to <http://www.nsf.gov/od/opp/philatelists.jsp> to follow the guidelines in ordering a cover. Please be aware it may take over six months to get your cover serviced and back to your mailbox.-DM



## Car Pool to the Edgemere

Recently the Executive Board discussed the possibility of moving a regular meeting to a Saturday afternoon to accommodate those members who cannot drive at night. While the Board decided to keep our meetings as scheduled, there is a need to form a car pool arrangement for future meetings and special events. If you would like to participate in a car pool arrangement, please contact **Doug Moss** at 469-363-2684 or [douglasmos@sbcglobal.net](mailto:douglasmos@sbcglobal.net) to make arrangements with a fellow member in your area. See you at the next meeting!

**Tell a friend about the DPCPS! Invite them to a meeting!**

The DPCPS meets on the second and fourth Wednesday of each month 7:30 pm. • The Edgemere, 8523 Thackery, Dallas, TX 75255

# Online Philately: Amos Press Publications

In the last newsletter I reviewed the online version of *Mekeel's & Stamps* magazine. This short article will focus on the offerings of Amos Press, which owns *Linn's Stamp News* and *Scott Stamp Monthly*. For only \$9.99 a year, you get a lot of bang for your bucks. In addition to having access to *Linn's*, you also get a monthly access to *Scott Stamp Monthly*, the *U.S. Specialized Price Guide* Updates and a printable Scott worldwide album. All of this for only \$9.99! The interface used to navigate the pages of the publications is easy to use. A right click of the mouse will zoom the page to the largest size. One feature that Amos does not offer that *Mekeel's* did was the ability to save the magazine in a pdf format. You are able to print out articles from the magazine. It is a great deal and I highly recommend you take advantage of the online subscription options of *Linn's* and *Mekeel's*.

## The Texas Philatelic Association



[www.texasphilatelic.org](http://www.texasphilatelic.org)

- ★ Support philately in the state of Texas.
- ★ Receive *The Texas Philatelist*, bi-monthly color journal.
- ★ Participate in Oklahoma Philatelic Society (OPS) stamp circuit.
- ★ Participate in TPA-OPS auctions.

**JOIN US!** Membership fees and dues are pro-rata based on the quarter an application is received: \$12 for January-March; \$9 for April-June; \$6 for July-September; \$13 for October-December (includes next full year). Membership may be applied for online at the TPA website, [www.texasphilatelic.org](http://www.texasphilatelic.org), or an application may be obtained by writing to: Lyle Boardman, 3916 Wyldwood Rd., Austin, TX 78739-3005.



## The DPCPS welcomes two new members in July!

The Dallas-Park Cities Philatelic Society was honored by the presence of two guests who decided to join the society July 8! Bill Wallace of Dallas is a former collector who has been wanting to get back into the hobby for many years after a long hiatus. Chris is new to the hobby via the inheritance of a relatives's collection. Please say hello to our new members and introduce yourself at the next meeting. Tell them how happy you are they are here!



**Bill Wallace and Chris Edgeworth are the newest members of the DPCPS! They joined the society at the July 8 meeting.**

## Perry Denton and the 1951 Danish Christmas Seal

Perry Denton gave a thoughtful presentation (June 19 meeting) on a fascinating group of Denmark Christmas seals and related documents surrounding a single Christmas seal dated around 1955. Perry obtained the stamps and materials at this year's Ameristamp/TEXPEX in Arlington, Texas. He acquired the Christmas seals from a dealer who had them unceremoniously grouped in a single binder. Perry admitted he was excited when he saw it since he collects Christmas seals but really didn't know what he had until he got home and examined his find a little closer.

The grouping included several sheets in various state of the finished seal, two original pencil sketches by the designer, camera ready negative, camera ready positive for overlay, printer's proof, two letters to the designer Knudsen, a number of news articles about the designer and one very oversized post card addressed to Knudsen with a sheet of Christmas Seals on one side. Unfortunately the writing on all of the documents was in Danish and have yet to be interpreted.



As each document was unveiled and examined, the group got genuinely excited to see such an amazing accumulation. There were a number of questions coming fast from the audience and there were several men who encouraged Perry to make an exhibit of the artifacts for a future stamp show.

Included in the presentation were news articles and photos of Knudsen. Although no one could read them to obtain the "full" story, it was evident she was respected for her work. It was very evident how much creativity and work went into her effort to get the final product out.

When Perry told the group about his purchase everyone agreed he got a bargain for only \$30. -**Jerold Plumb**



## TSDA Bourse Richardson Civic Center July 10-11 Friday 1 pm to 8pm & Saturday 9 am to 4 pm

