

# Stamps & Tongs

The E-mail Newsletter of the  
Dallas-Park Cities Philatelic Society

MARCH  
2009

## Scenes from a stampshow



The Dallas-Park Cities Philatelic Society had a strong presence at the recent Ameristamp EXPO/TEXPEX show in Arlington. Over 90 dealers were present at the show along with many framed exhibits. In the upper left is the group photo of the DPCPS members who met Saturday afternoon at Tom Cunnigham's dealer booth. Starting in the front from left to right, Sheena Bosworth, Harry Pedersen, Julia Baltser, then behind them is Sam Phillippi and Jerold Plumb. Behind them is Tom Cunnigham. In the next photo moving clockwise, Jack Urish takes a look at the TPA auction lots. Below, Perry Denton points out one of two Inverted Jennies at the show. Moving along, Rod Gabel takes a look at Tom's stock with the help of Sam. And then there is Dr. Fernando Torres looking in some red boxes for items for his collection.

Dallas-Park Cities Philatelic Society  
2009 Officers & Board of Directors

President

Rod Gabel

Vice-President

Harry Pedersen

Secretary

Sam Phillippi

Treasurer

Jack Urish

Board of Directors

Dr. Harold Boehning

Doug Moss

Mark Solomon

Newsletter Editor

Doug Moss

Youth Philately

George & Deborah Kempston



## Notes from the Editor



The big show has come and gone this year. I enjoyed seeing all of the new dealers and material. I spent most of my time at the dollar cover tables when I was not volunteering at the TPA table or the APS "stamp by the bucket" table. I spent about half of my money with the out of town dealers and half with Texas dealers. No news yet as to what the APS, dealers and out-of-towners thought of the show. Driving to Arlington for three days was kind of a beating to me, but I prefer not leave Richardson unless I have to. The DPCPS was awarded the Spaulding Trophy by the TPA for the chapter having the most members joining the TPA in a year. Way to go DPCPS!

If you have not volunteered to give a presentation in 2009, I am sure Harry would love to hear from you. And now is your chance to write an article for the newsletter. My article inventory is getting low, and now is the prime chance for you to expand your adventure in philately by being a philatelic journalist. It is not hard, you know something about your collecting interest than anyone else. Share you hobby with the rest of the membership!

One final note, if you paid your dues back in November, please Rod Gabel at the next meeting. Nothing serious, he just wants to get some information from you and give you a pat on the back for paying your dues early. Do not forget that our next meeting is the Spring Cleaning bourse. Bring you pin money and your philatelic items you no longer need. See you then-DM.

### March-April 2009 Philatelic Calendar

**March 11** Spring Cleaning Bourse (see page 4 of the newsletter). Bring items you would like to trade or sell. Tom Cunningham and Jim Myers will bring their inventory.

**March 25** Mini Auction and Philatelic Spotlight: Rick Houghland.

**April 6** DPCPS Board meeting @ The Edgemere.

**April 8** Program: "UN Peacekeeping Stamps and Postal History" speaker Doug Moss.

**April 10-11** TSDA Bourse, Richardson Civics Center.

**April 22 Quarterly Auction! Get those lots ready to sell!**

To volunteer for a presentation or Philatelic Spotlight, contact Harry Pedersen.

Bring a friend to the next meeting! Encourage them to join the DPCPS!

## Cunningham Philatelics

### Philatelic Consultants

Elusive Items  
Stamps and Covers

Collections  
Appraisals

THOMAS L. CUNNINGHAM  
A.P.S. 082424, TSDA  
(214) 546-1179

P.O. Box 863237  
Plano, TX 75086-3237  
cunninghamstamps@aol.com

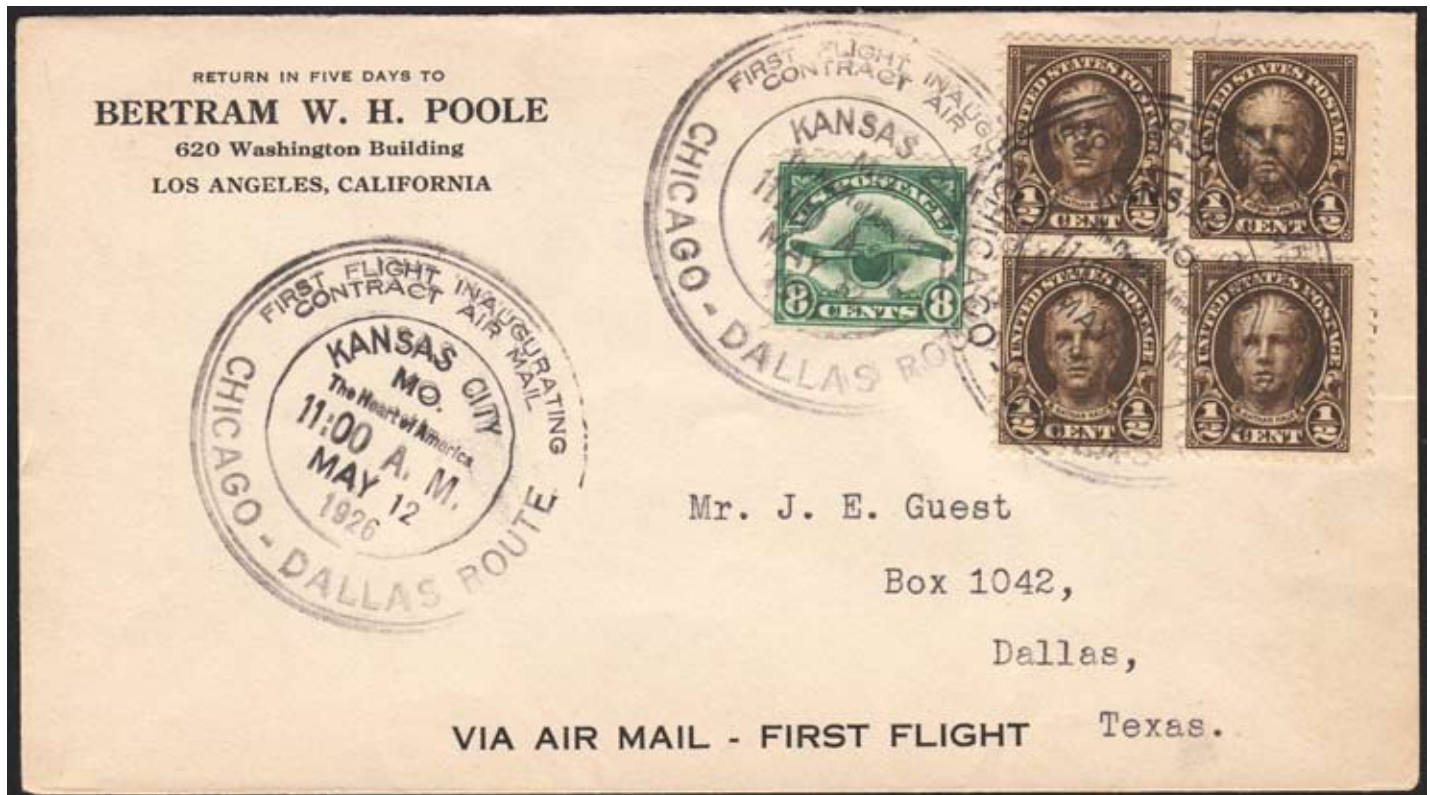
## stampsuniversal.com

Jim Myers

US, Worldwide, 19th Century, #1's, Socked on the Nose,  
Cancels, Topicals, Great Britain & Colonies & Ireland.

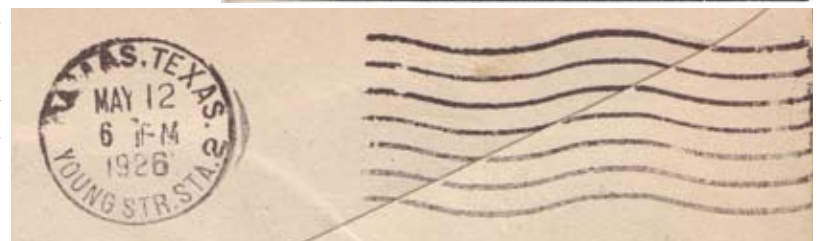
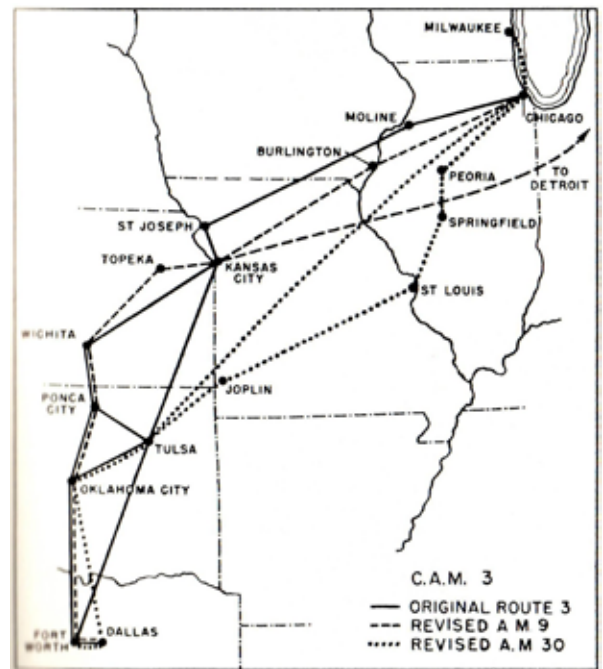
P.O. Box 2047 Coppell, TX 75019  
(972) 304-1671 jasdmyers@earthlink.net

# Metroplex Postal History of the Month



The March Postal History of the Month item was provided by Jim Myers. This is a First Flight Cover documenting the Kansas City to Dallas leg of the Chicago to Dallas Route (Contract Air Mail (C.A.M.) Route Number 3). Braniff Airways was the airline who had the air mail delivery contract. The recipient of the letter, J.E. Guest, was an early postmaster of Dallas. The cover is franked with with a Scott C4 Wooden Propeller and Radiator airmail stamp and four Scott 551 Nathaniel Hale stamps from the Fourth Bureau Issue Series of 1922. The stamps cover the 10 cents per ounce rate in effect at the time for distances under 1000 miles.

This cover is very interesting because of its markings. The postmark on the cover is really a cachet commemorating the flight. The *American Air Mail Catalogue* (Fifth Edition) states that the Post Office Department released the same cachet to all of the cities, with the exception of Kansas City. The Kansas City cachet on the cover above matches the Type 3 example in the catalogue, with the addition of "Heart of America" under Kansas City, Mo. The cachet was stamped at 11:00 am, with the back stamp indicating the letter arrived in Dallas at the Young Street Station at 6 pm. Feel free to contact Jim Myers to see this fine cover.



**Tell a friend about the DPCPS! Invite them to a meeting!**

The DPCPS meets on the second and fourth Wednesday of each month 7:30 pm. • The Edgemere, 8523 Thackery, Dallas, TX 75255

# Spring Cleaning Bourse

Wednesday March 11 @ 7:30 pm



**T**he **Dallas-Park Cities Philatelic Society** will be having our second annual “Spring Cleaning Bourse” during our first meeting in March. **Tom Cunningham** and **James Myers**, our two member dealers, have both agreed to bring material for purchase. They will each be given a table of their own.

However, the bourse is not just for our two dealers. The entire membership is encouraged to bring material of their own for sale or trade! This is an opportunity, as indicated by the name of the event, “Spring Cleaning Bourse”, to dig out any philatelic treasures you care to part with and offer them for sale or trade. The more participation we have the more successful this event will be!

**Remember to mark your calendars: March 11th at 7:30  
at the Edgemere. Bring your philatelic material!**

## Danish Bi-Colors and Philatelic Spotlight in February

Harry Pedersen presented the February program with a Power Point Presentation of Danish Bi-Colors. Harry explained the intricacies of the bi-colors stamps of Denmark. If you want to get into inverts and fly-specking, this is the place to be. The presentation also delved into the bi-colors of the Danish West Indies (DWI). The bi-colors of the DWI also include bi-sects! At the next meeting in February, Dr. Craig Boyd shared with the group how he came to stamp collecting. He collects everything in the world and still has his original stamp album. Dr. Boyd is able to add to his worldwide collection by his many travels abroad. The meeting ended with a mini-auction where all of the lots were sold to eager bidders. Many thanks to Harry and Craig for sharing a part of their collecting story with the rest of the members.



## Back to the Basics: Philatelic Terms and Definitions

The purpose of this column is to cover some of the basic philatelic terms and definitions used in our great hobby. We have a diverse group of people in our society, beginners who are new to the hobby and those that spend thousands of dollars a month on their collection.

This month I will tackle a term that took me some time to understand when I made the move from just collecting stamps to collecting postal history: the **cover**. In our hobby a **cover** is the name you give to an envelope that has served its purpose in life. The *Encyclopedia of United States Stamps and Collecting* (Juell & Rod Editors, United States Stamp Society, 2006) defines a cover as “any intact envelope, postcard, wrapper or similar mailed items.” A **cover** is a letter that could have been mailed, either for a commercial purpose or a philatelic purpose. An example of a philatelic cover includes a first day cover (**FDC**), First Day or Issue covers (**FDOI**) and first flight covers (**FFC**), as illustrated in the Metroplex Postal History of the Month feature. Commercial covers can be anything from a postcard from a pharmaceutical company to a doctor (**Dear Doctor covers**) to a piece of mail that has survived a airplane crash (**crash cover**) or that sunk with a ship (**shipwreck cover**). One area that I find fascinating are censored covers. A **censored cover** is mail that was intercepted by a government, the contents examined, and then makes it way to the addressee.

Next month I will talk about sand dunes, iron curtains and wallpaper. If you have a term you would like to see explained, send me an e-mail. Or better yet, research the term and write this column one month! **Doug Moss**

## The Texas Philatelic Association



[www.texasphilatelic.org](http://www.texasphilatelic.org)

- ★ Support philately in the state of Texas.
- ★ Receive *The Texas Philatelist*, bi-monthly color journal.
- ★ Participate in Oklahoma Philatelic Society (OPS) stamp circuit.
- ★ Participate in TPA-OPS auctions.

**JOIN US!** Membership fees and dues are pro-rata based on the quarter an application is received: \$12 for January-March; \$9 for April-June; \$6 for July-September; \$13 for October-December (includes next full year). Membership may be applied for online at the TPA website, [www.texasphilatelic.org](http://www.texasphilatelic.org), or an application may be obtained by writing to: Lyle Boardman, 3916 Wyldwood Rd., Austin, TX 78739-3005.